

# East West Rail – Overview

# Introductions

- **Paula Whitworth**, Senior Stakeholder Manager (East) Responsible for working with ward councillors, resident associations and parish councils to build close relationships with local communities across Cambridgeshire.
  - Your dedicated point of contact.
  - Please email at [Paula.Whitworth@eastwestrail.co.uk](mailto:Paula.Whitworth@eastwestrail.co.uk)
- **Rakesh Athukattu**, Project Engineering Manager (East)
- **Jon Cornwell**, Development Programme Manager (Cambridge)
- **Joe Harris**, Strategic Relationships Manager
- **Adam Lawless**, Senior Political Relations Manager

# About EWR Co

East West Railway Company (EWR Co) is an arm's length body of Government, set up to plan, design and deliver East West Rail safely, on time, and on budget to their specification.

By improving connectivity, the railway will unlock sustainable economic growth – helping realise the region's potential as a global hub for life sciences, innovation and investment.

We were created to lead one of the most significant rail projects in the UK with a clear focus on **efficiency**, **sustainability** and **community benefit**.

The Oxford-Cambridge Growth Corridor presents an opportunity of a **£78bn boost to the UK economy by 2035**.



**East West Rail is the key to unlocking the potential growth in the corridor.**

## About the region

3.5 million  
people and over  
2 million  
jobs

Oxford and Cambridge  
together generate

£143bn  
a year and host world-leading  
research and innovation clusters

17  
unicorn companies and  
£2.4bn  
in venture capital investment in 2025

## What EWR unlocks

Increasing  
economic growth  
every year



Support new  
communities  
and future growth locations

Reduce congestion  
and  
improve air quality  
by providing an alternative to car travel

Improve access  
to jobs, education, healthcare  
and essential services

Drive  
regeneration  
around stations in Bicester,  
Bletchley and Bedford

Cut carbon  
emissions  
through hybrid battery  
electric trains

## Key facts

17  
stations  
currently in scope



Up to  
50%  
quicker  
journeys vs car travel



fewer  
lorries  
on local roads



Nearly  
100 miles  
of new and upgraded railway



95  
minutes  
end-to-end  
journey time

Over  
3.5 million  
people connected

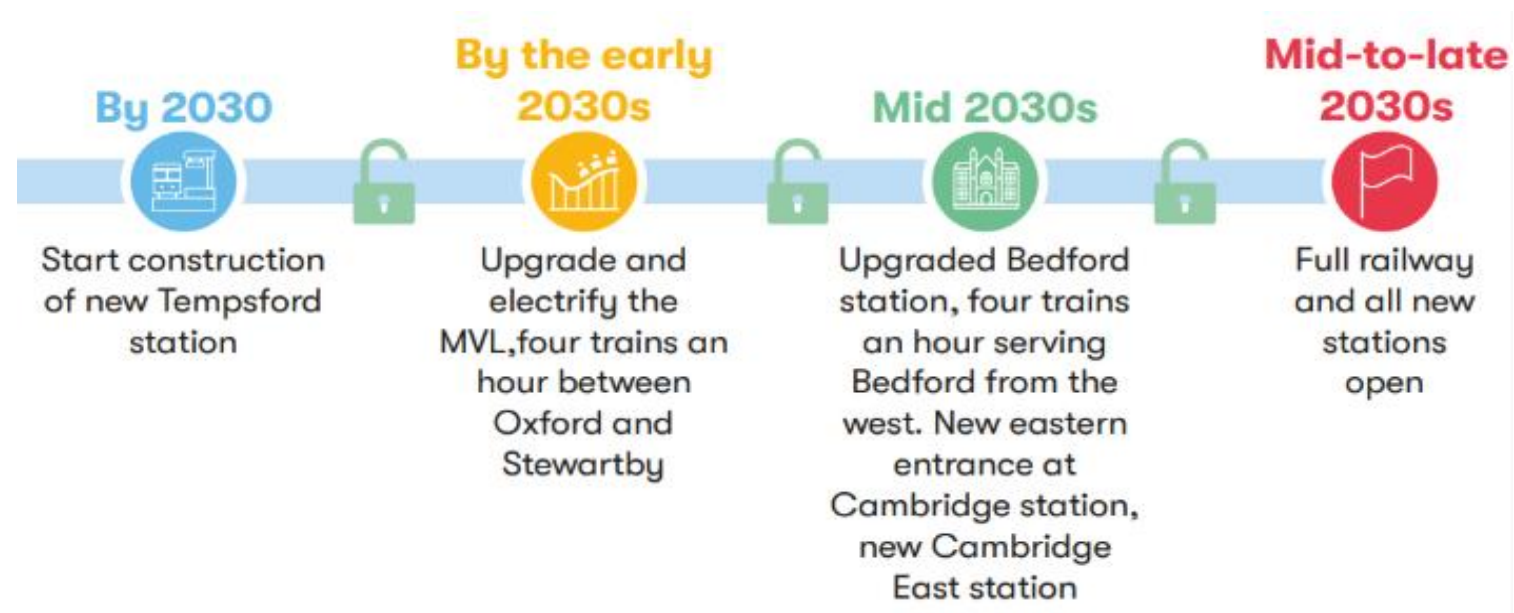
71%  
of local community support

Supported by  
businesses  
and local  
authorities along  
the route



# Our plans to deliver East West Rail

We've always planned for EWR to be built in stages to better-connect the region as soon as possible. Now, we're accelerating parts of the programme so that communities can experience the benefits even sooner.

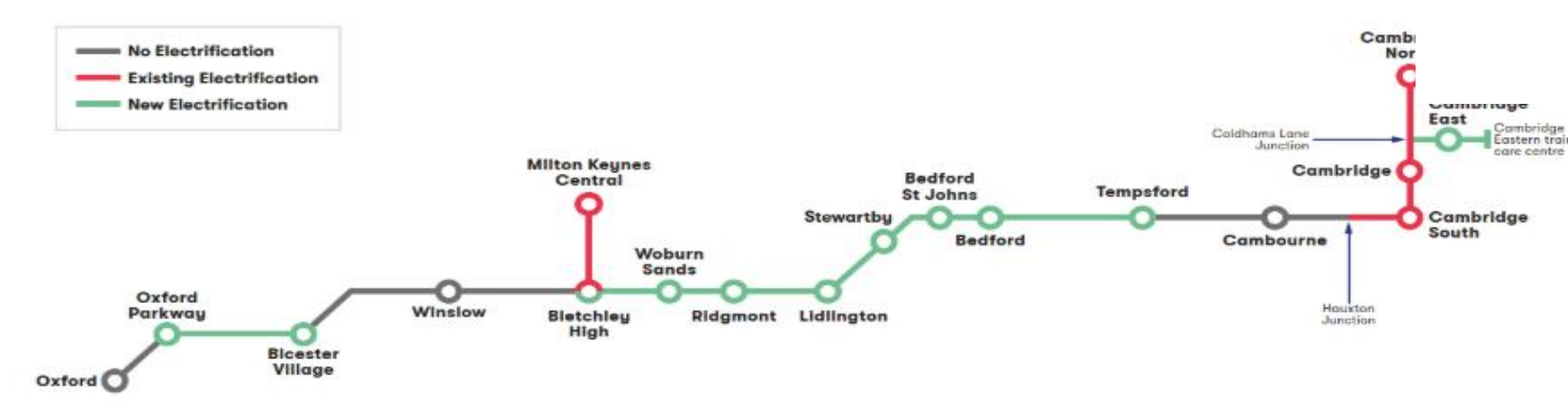


# Overhead line electrification

On the sections where electrification is to be provided, we would install a network of wires above the tracks to supply electric power to the trains. These wires would be supported by masts parallel to the railway.

Our designs would not preclude full electrification across the route for the future. We've also identified land for potential utility diversions on sections of the route which may not be electrified and are continuing to explore whether these are still required.

We're currently proposing to electrify the railway as follows:



# Door to door connectivity

As part of our plans to connect communities and businesses across the Oxford-Cambridge corridor, we're proposing to invest in improvements so people can reach their local stations safely and conveniently.

Our station designs and wider proposals support access by walking, wheeling and cycling, bus, car and other forms of transport. Our approach is guided by the following considerations:



**Providing connectivity to and from stations, to areas for homes, businesses and jobs**

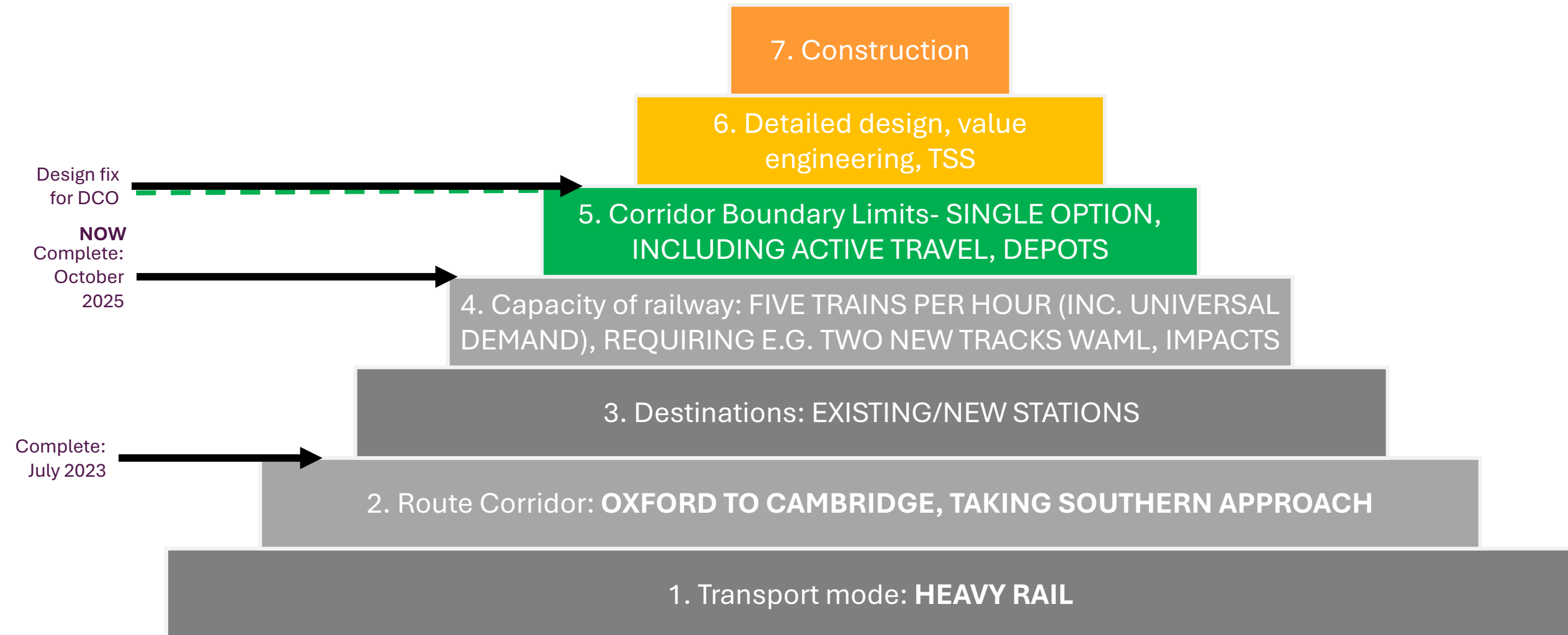


**Making journeys to and from the railway feel safe, seamless, and convenient**



**Maximising the opportunity for people to choose active travel**

# Overview of decision-making hierarchy



# EWR in Cambridgeshire

# Our latest proposals

- A new station at Cambourne
- A new eastern entrance for Cambridge station, from Clifton Road
- A new Cambridge East station
- Cambridge Eastern train care centre
- A mined tunnel under the A428 and Bourn Airfield to reduce disruption
- Green bridges to address potential severance impacts for protected species in this area
- Alternative connections where level crossings are closed



# Consultation

# Ways to respond to the consultation

You can respond to our consultation in the following ways:

- Completing the consultation feedback form online at [eastwestrail.co.uk/feedback](https://eastwestrail.co.uk/feedback)
- Emailing a copy of the feedback form to [consultation@eastwestrail.co.uk](mailto:consultation@eastwestrail.co.uk)
- Sending a copy of the feedback form to Freepost EAST WEST RAIL
- Handing in a copy of the feedback form at one of our consultation events

For further information or to request a paper copy of the feedback form, get in touch at [contact@eastwestrail.co.uk](mailto:contact@eastwestrail.co.uk) or by calling us on 0330 134 0067.

**east  
west**  
RAIL

**Consultation  
2026**

14 April to 9 June

View our consultation page and have your say.

Consultation 2026



# Consultation materials

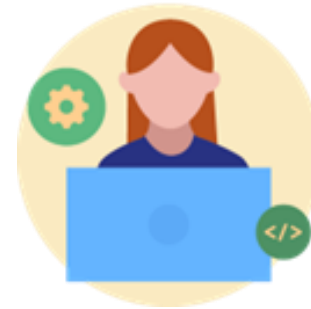
We've prepared a range of materials to help the public understand our updated proposals and share their feedback. These are available at [eastwestrail.co.uk/consultation2026](https://eastwestrail.co.uk/consultation2026) and include:



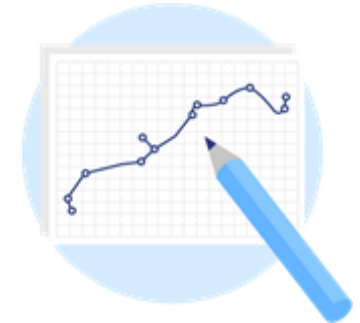
**A consultation brochure**



**Route maps**



**An interactive online map**



**Plans**



**Flythroughs**



**A Feedback Form**



**FAQs**

# Consultation in-person events:

Location	Venue	Date/ Time
Online event	MS Teams	20th April- 18:00-20:00
Tempsford	Stuart Memorial Village Hall	23 <sup>rd</sup> April- 14:00-19:00
Woburn Sands	Summerlin Community Centre	25 <sup>th</sup> April- 12:00-17:00
Bletchley	Bletchley Masonic Centre	29 <sup>th</sup> April- 14:00-19:00
Stewartby	Stewartby Village Hall	30th April- 12:00-17:00
Shelford	Shelford Rugby Club	1st May- 14:00-19:00
Online event	MS Teams	6th May- 14:30-16:30
Oxford	Kings Centre	12 <sup>th</sup> May-11:00-18:00
Lidlington	Lidlington Village Hall	14 <sup>th</sup> May- 14:00-19:00
Newton Longville	Longueville Hall	15th May- 14:00-19:00
Milton Keynes	Venture Conferencing	18 <sup>th</sup> May- 11:00-18:00
<b>Cambridge</b>	<b>Cambridge United Football Club</b>	<b>21<sup>st</sup> May- 11:00-18:00</b>
Bedford	Kings House	23 <sup>rd</sup> May- 11:00-18:00
<b>Cambourne</b>	<b>Cambridge Belfry Hotel</b>	<b>30<sup>th</sup> May- 11:00-18:00</b>
<b>Online event</b>	<b>MS Teams</b>	<b>2<sup>nd</sup> June-10:30-12:00</b>

# EWR timeline

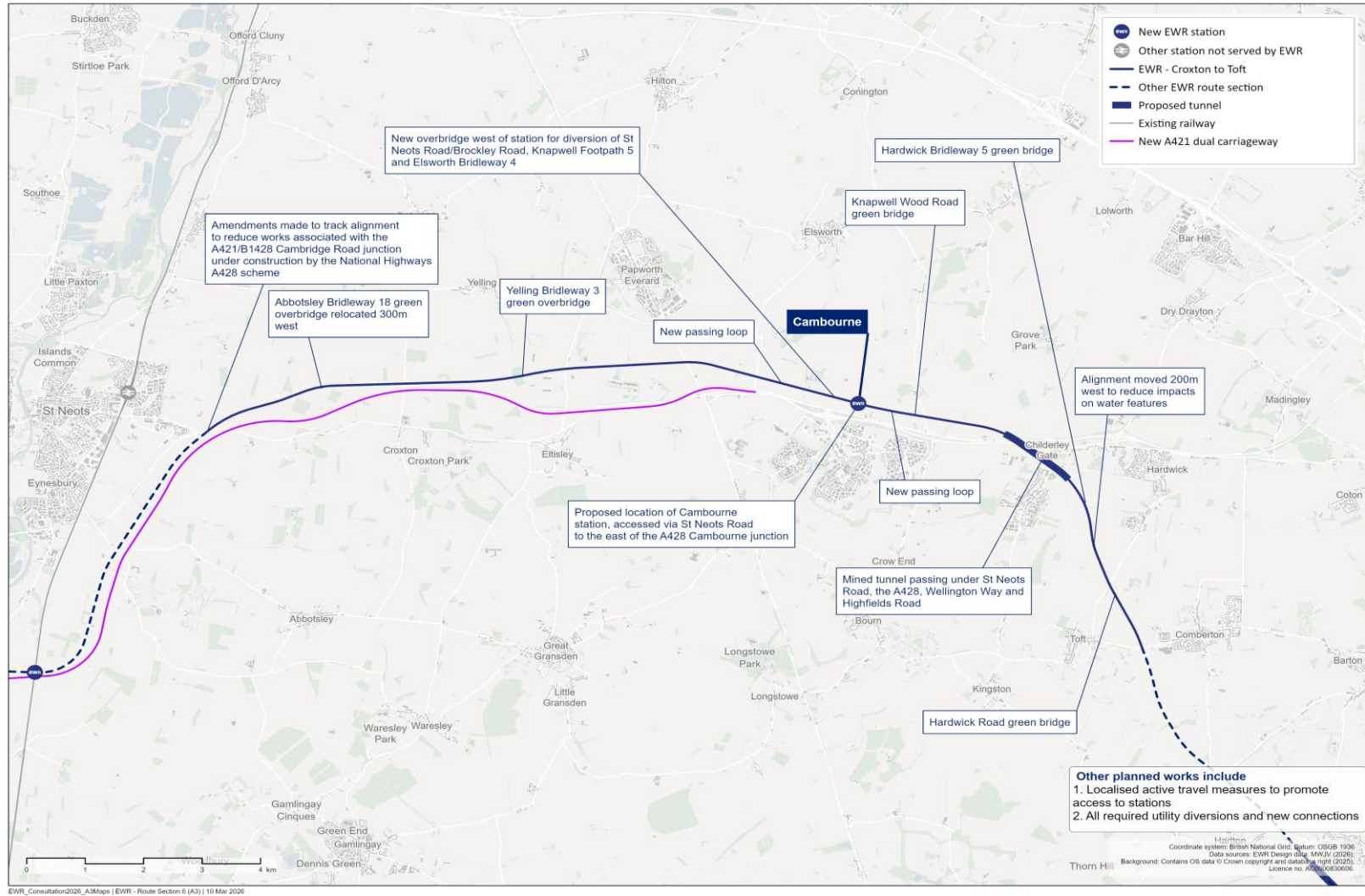
## So far

## Our path to DCO



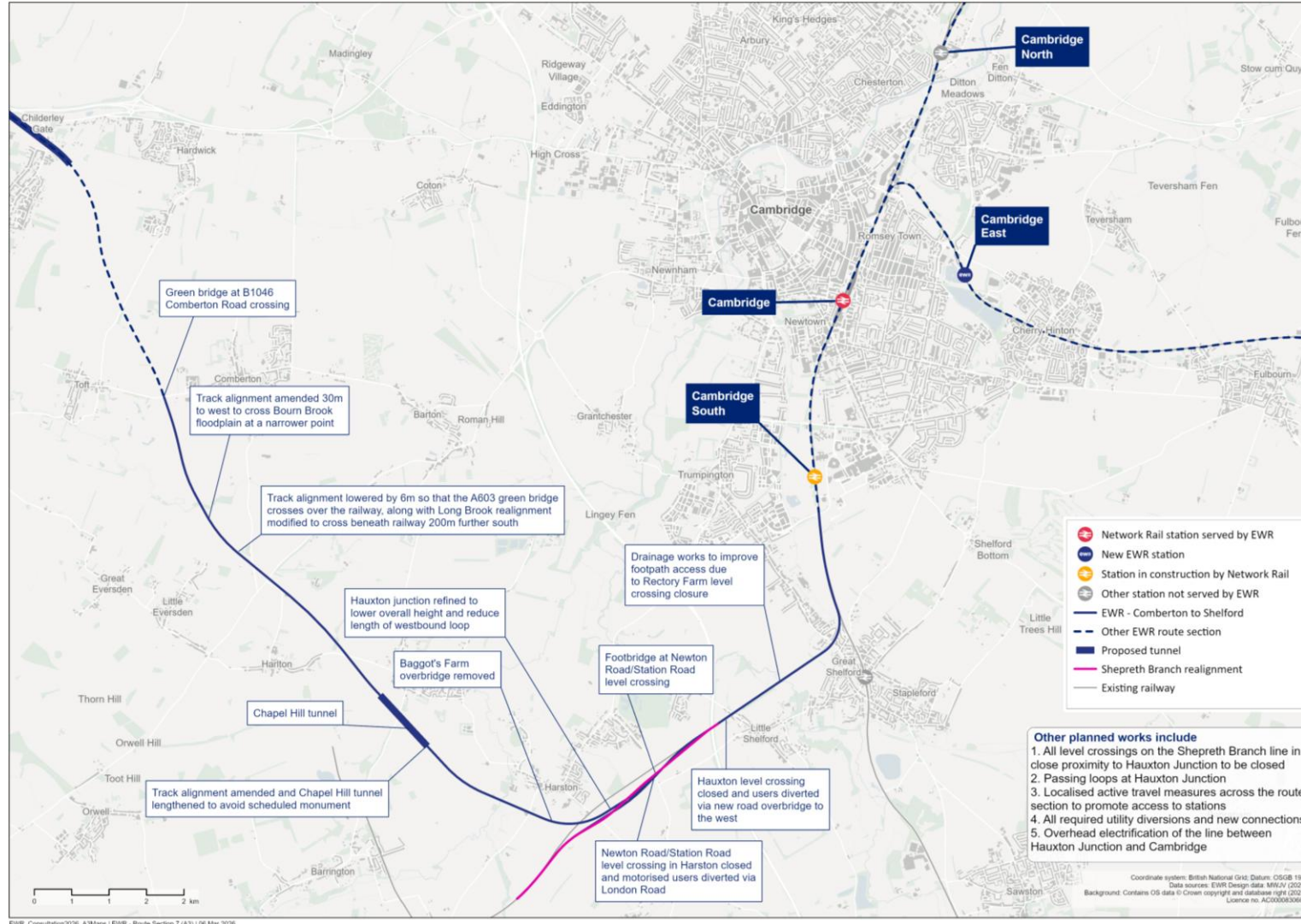
# Maps

# The route – Croxton to Toft



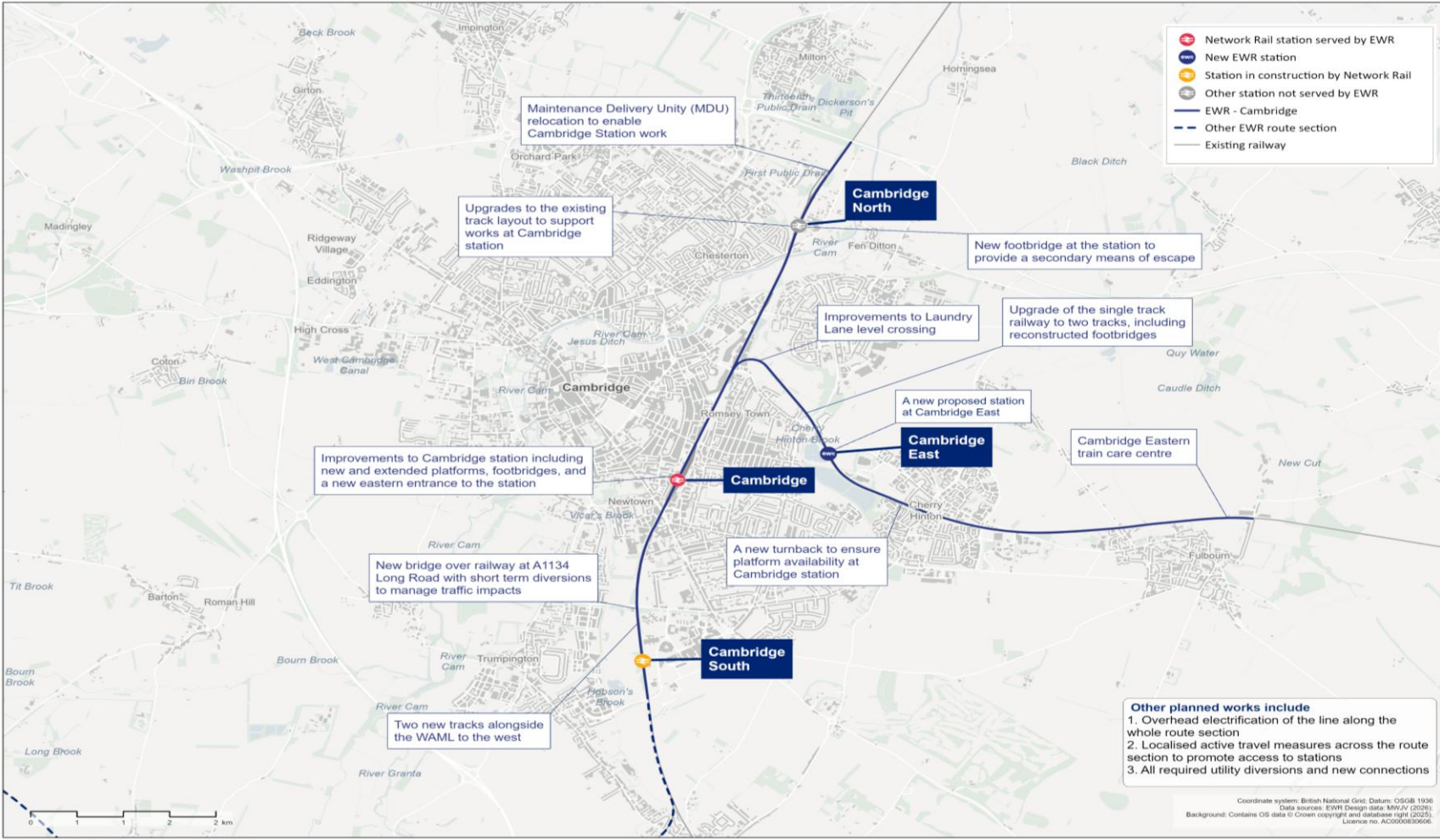
Map of the planned route of the project from Croxton to Toft

# The route – Comberton to Shelford



Map of the planned route of the project from Comberton to Shelford

# The route - Cambridge



Map of the Cambridge route